

FINE ARTS THEATRE PRODUCTION GUIDE



WELCOME TO THE MONUMENT HOME OF FINE ARTS THEATRE

The Monument
C/O Production Department
444 Mt. Rushmore Road N.
Rapid City, SD 57701

605.394.4115

themonument.live

Contacts:

JASON HOPE - Production Manager

E-mail
jasonh@themonument.live

Office Number
605.394.4115

Cell Phone Number
605.381.0233

Amy McClure - Lead Tech

E-mail
amym@themonument.live

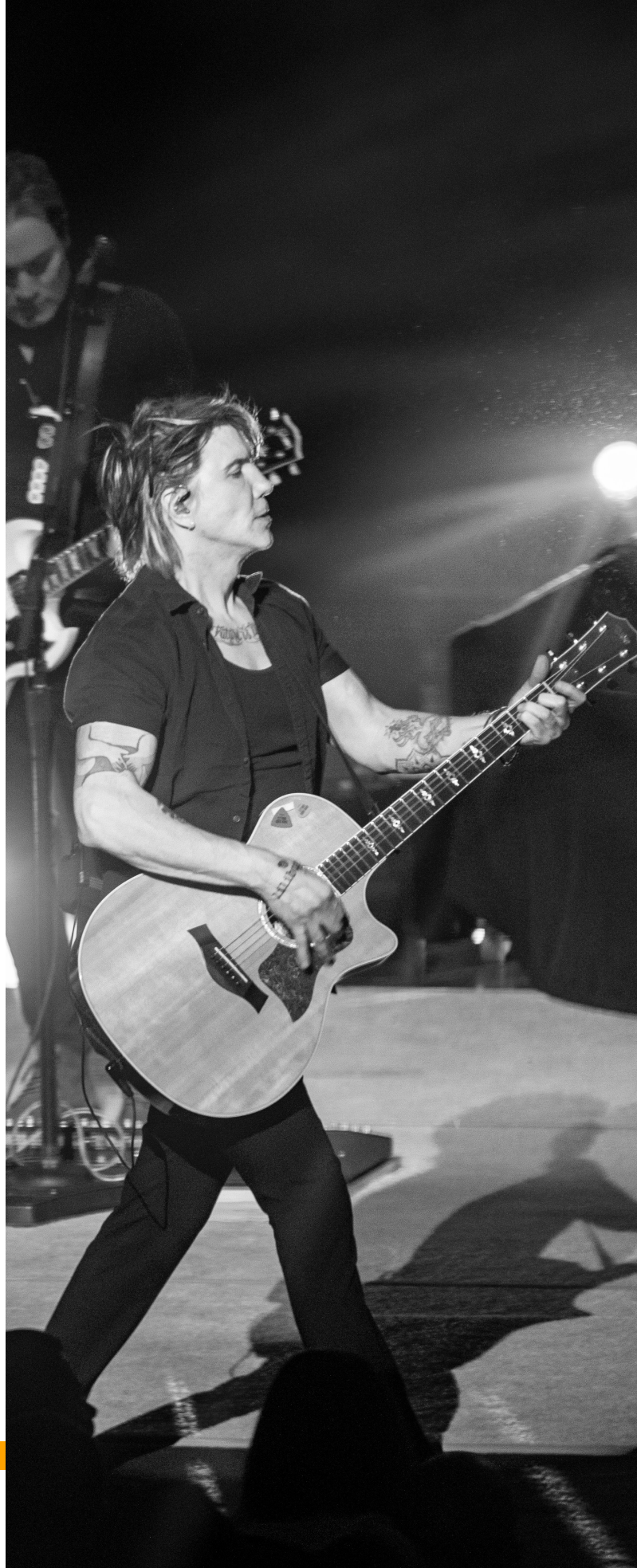
Office Number
605.394.4115

Cell Phone Number
605.939.5992

FINE ARTS THEATRE

Table of Contents

- 3: Directions and Parking
- 4-5: Theatre Complex Maps
- 6-7: Venue Equipment
- 8: 2 Color Rep Plot FOH
- 8: 3 Color Rep Plot on Stage
- 9: Theatre Lighting Patch Layout
- 10: Lighting Inventory
- 12: Theatre Lineset Schedule
- 13: Theatre Information
- 14: Theatre Seating Chart
- 15: Theatre Plan - Stage View
- 16: Acoustic Shell Drawing
- 17: Elevation from Stage
- 17: Elevation from House
- 18: Elevation from House Right
- 18: Tour Master Choral Riser Info
- 19: Safety & Production
- 20: Complex Map
- 21: House Equipment



DIRECTIONS

FROM I-90 - Smaller Truck Route BLUE LINE

From I-90 (heading East or West) take Exit 57, the I-190 Byway heading South and take Exit 1C. Turn left onto North Street and proceed to the 4 Way Stop. Turn right onto Mt. Rushmore Road, and take the second left into The Monument driveway. Follow the road towards the complex and loading docks 15-19 are on the right.

FROM I-90 - Larger Truck Route RED LINE

From I-90 (heading East or West) take Exit 57, the I-190 Byway heading South continue to street light and take a left on Omaha St. Continue in the left lane and take a left at the first light, Mt. Rushmore Road. Take your first right into The Monument driveway. Follow the road towards the complex and loading docks 15-19 are on the right.

FROM AIRPORT - Approximately 20 minutes

Depart airport to SD-44 West/East Omaha St., continue straight for 9 miles. Turn right onto Mt. Rushmore Road. Take your first right into The Monument driveway. Follow the road towards the complex and loading docks 15-19 are on the right.



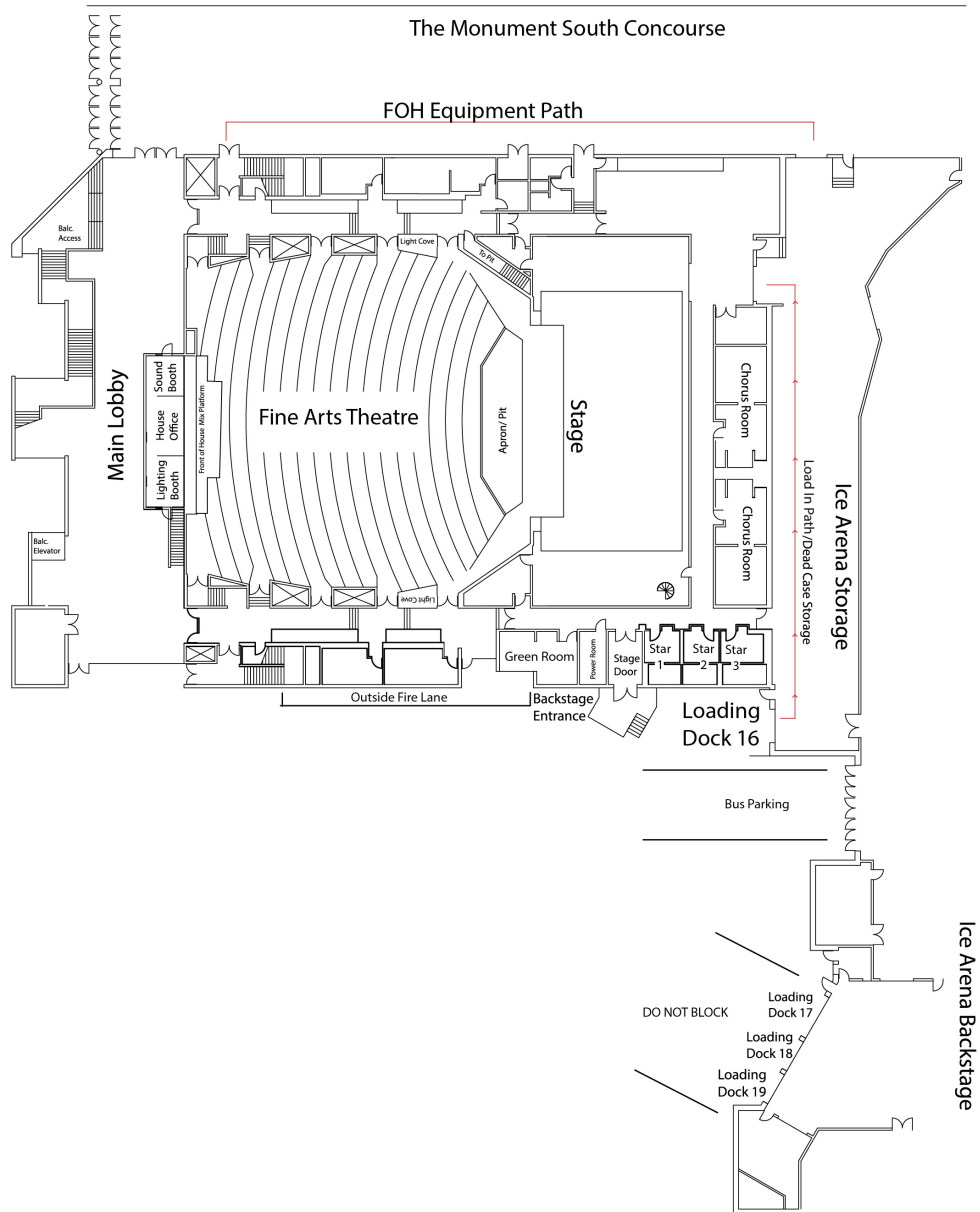
Click [HERE](#) for directions to The Monument



SHOW PARKING

Trucks can be queued in Lot A2 or within the gated area by loading dock doors. Buses can be located directly North of loading docks. Shore power is available at the bus parking location. The loading dock door entrance is also the stage door for access throughout the day. Door dimensions are: 10'w X 14'h

FINE ARTS THEATRE



Back of House

- 3 - Star Dressing Rooms (main area with private restrooms and showers)
 - 2 - Chorus Dressing Rooms (with restrooms and showers) - 16 stations each
 - 1 - Production Office/ Green Room
- Backstage laundry facilities are available
- 2 sets of washer and dryers, dedicated to theatre use (no mops heads, etc.)

Load In Access

- 1 Loading Dock - 100' push to stage
- Additional loading docks available for use near the Ice Arena
- Must be advanced

Stage

78' wide x 43' deep and is built of Maple Hardwood, with a medium stain and satin finish. The stage cannot be painted black. Stage can be lagged with pre-drilling, and there are no traps.

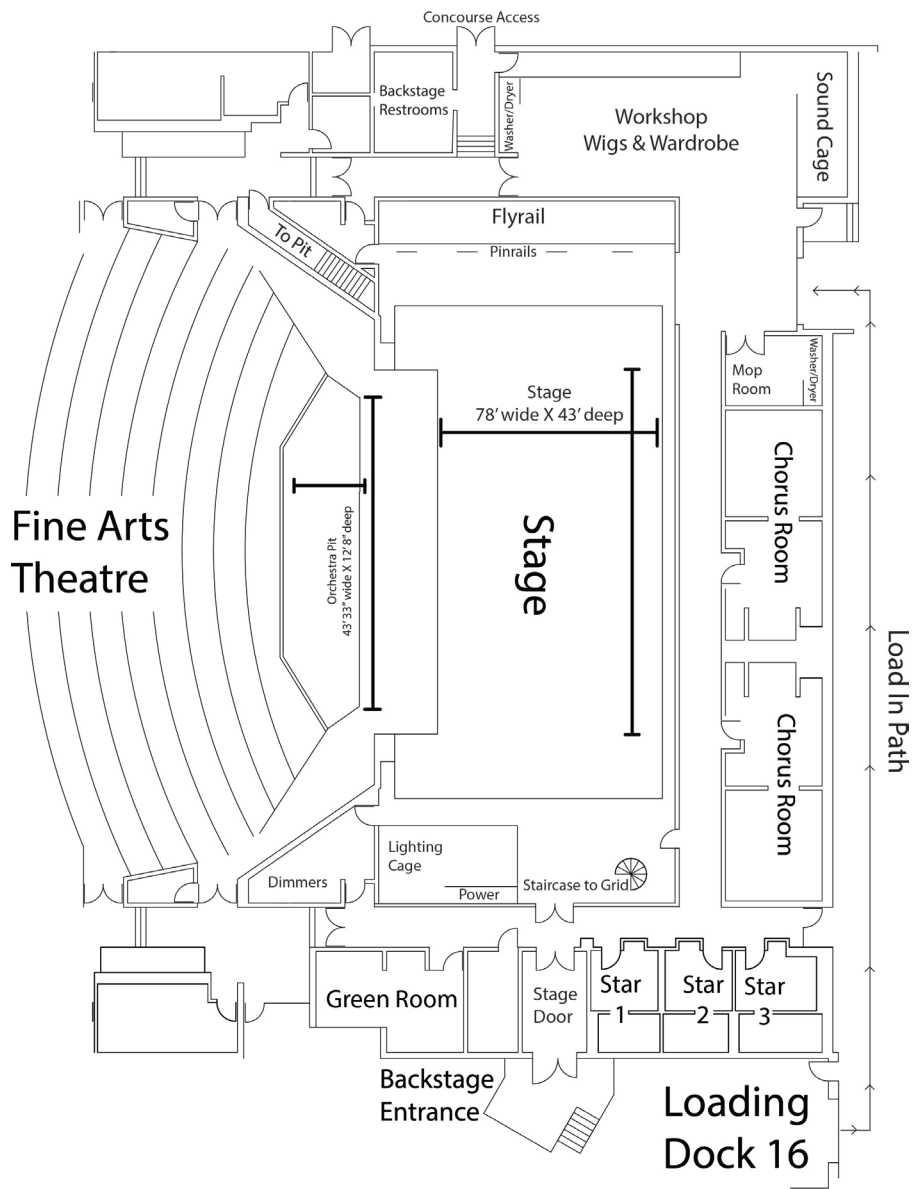
Proscenium

Opening is 55'8" wide and 24' tall.

Apron and Orchestra Pit

The orchestra pit is 9'4" deep, consisting of 3 levels of risers (not hydraulic), the top of which is 40" tall, and the lower two are 36" tall.

The Apron is an irregular pentagon, which is 12'6" at its deepest.



VENUE EQUIPMENT

Staging

- 7 - Tour Master Choral Risers - 3 Steps High
- 1- Acoustic Shell
- 4 Side Walls, 4 Back Walls, 3 Drop in Roof

Pianos

- Piano tuner available upon request
- 1 - Kawai Upright Piano
- 1- Kawai Baby Grand Piano

Venue Audio

- The house PA is mono, and is composed of a central JBL curvature array consisting of six JBL VRX 932LA-1. Side fills are EV FRI_122/64, balcony fills are EV-12, and subs are EV QRX-218S.
- The house sound board is a Yamaha Is9. The booth has a CD player, 1/8" jack, and reel to reel.
- There are patch points to and from the sound booth on downstage left and right (upstage of plaster line), as well as a 12 channel snake from downstage left to FOH.
- House has a single channel clear-comm system, with connections DSL, DSR, FOH, Sound Booth, Lighting Booth, House lights position, flyrail, and backstage in the workshop area. The Monument carries 15 belt packs, and several double and single earmuffs.
- House also has dressing room, a backstage workshop, and hard of hearing feeds.

Venue Lighting

See house lighting plot at end of guide, along with related documentation.

- House lights are controlled from the lighting booth at the back of the house or from onstage right. There are no controls for house lights from the front of house mix position.

Lighting Positions

- Front Light
 - Near and Far catwalks
 - Covers on HL & HR
 - There are no balcony rails
- Down Light
 - Proscenium catwalk, 1st, 2nd, 3rd, 4th, and 5th electrics
- Side Light
 - Rolling Lighting Booms (8 of various sizes)
 - High Sides on electrics
- First and Second

Lighting Boards

The primary house lighting board is the Strand Pallet. There is an ETC color source 40 AV onstage for basic patching and checking.

- Show Control - Show can take control of house dimmers & DMX from FOH, SL & SR.

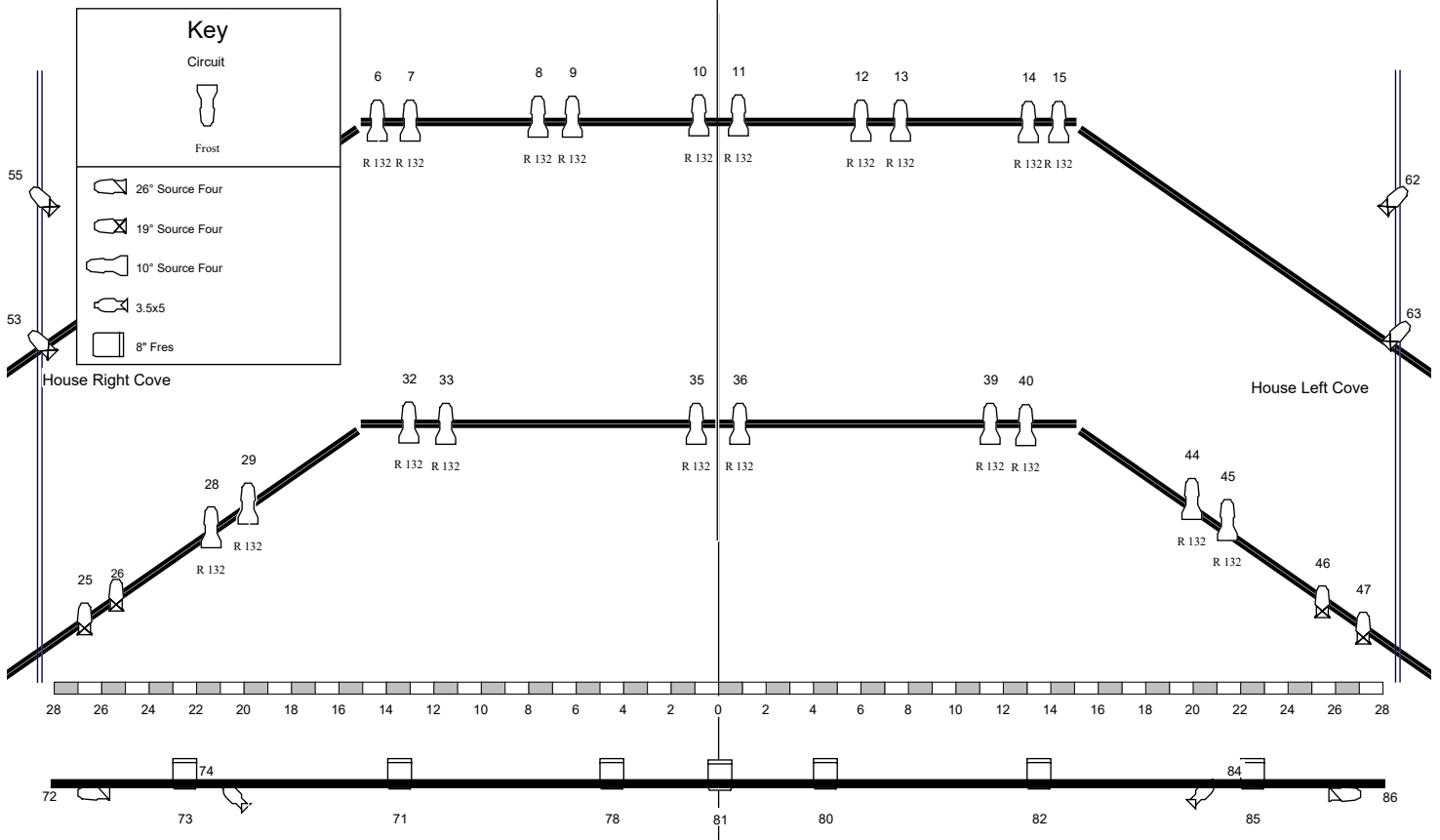
Additional Lighting Equipment

See lighting inventory at end of guide for fixture list

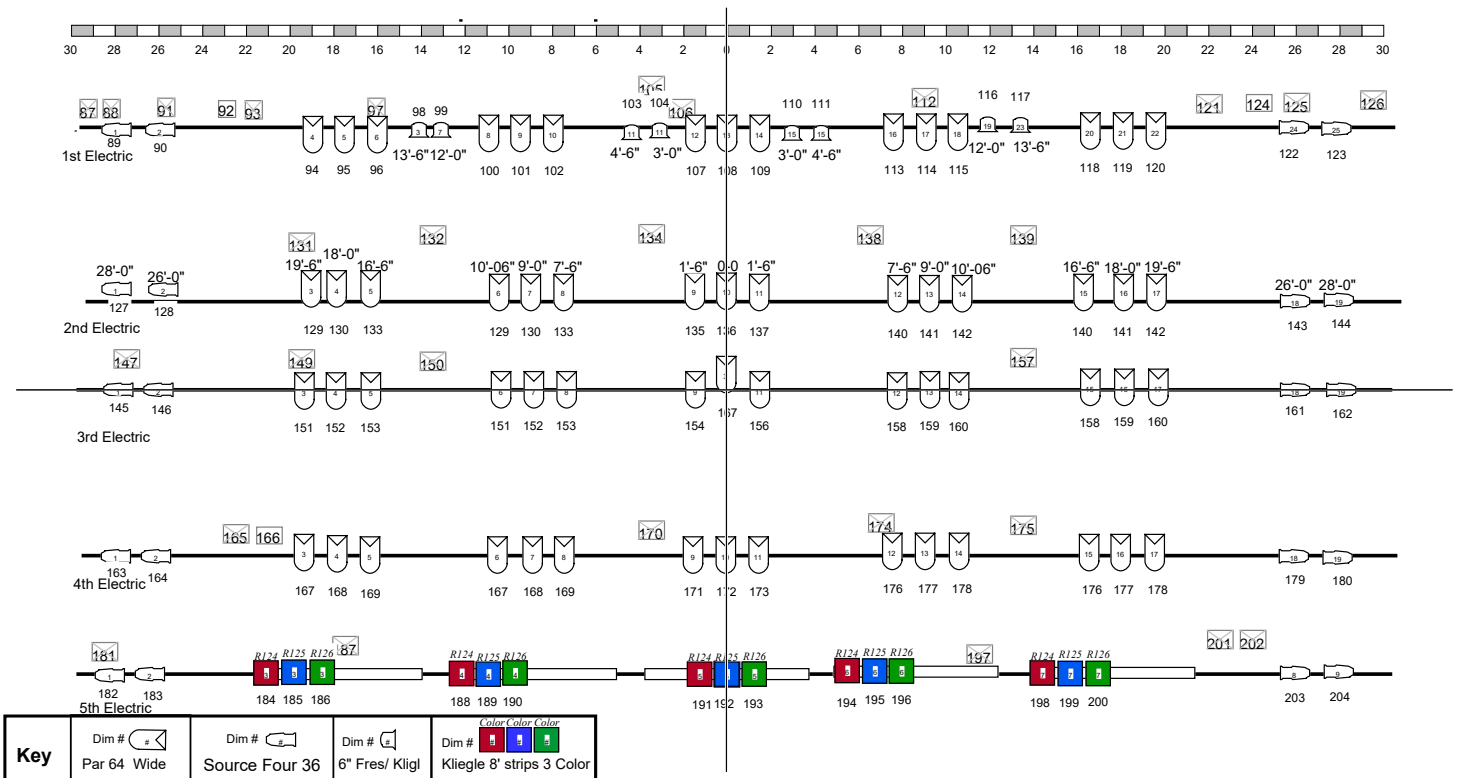
- Several B-sizes GOBOS available
- 200 2.4k strand cd80 Dimmers
- House stocks primarily Rosco Gel
- Follow spots - 4 strong Super troupers 2k

Diagrams located on next page

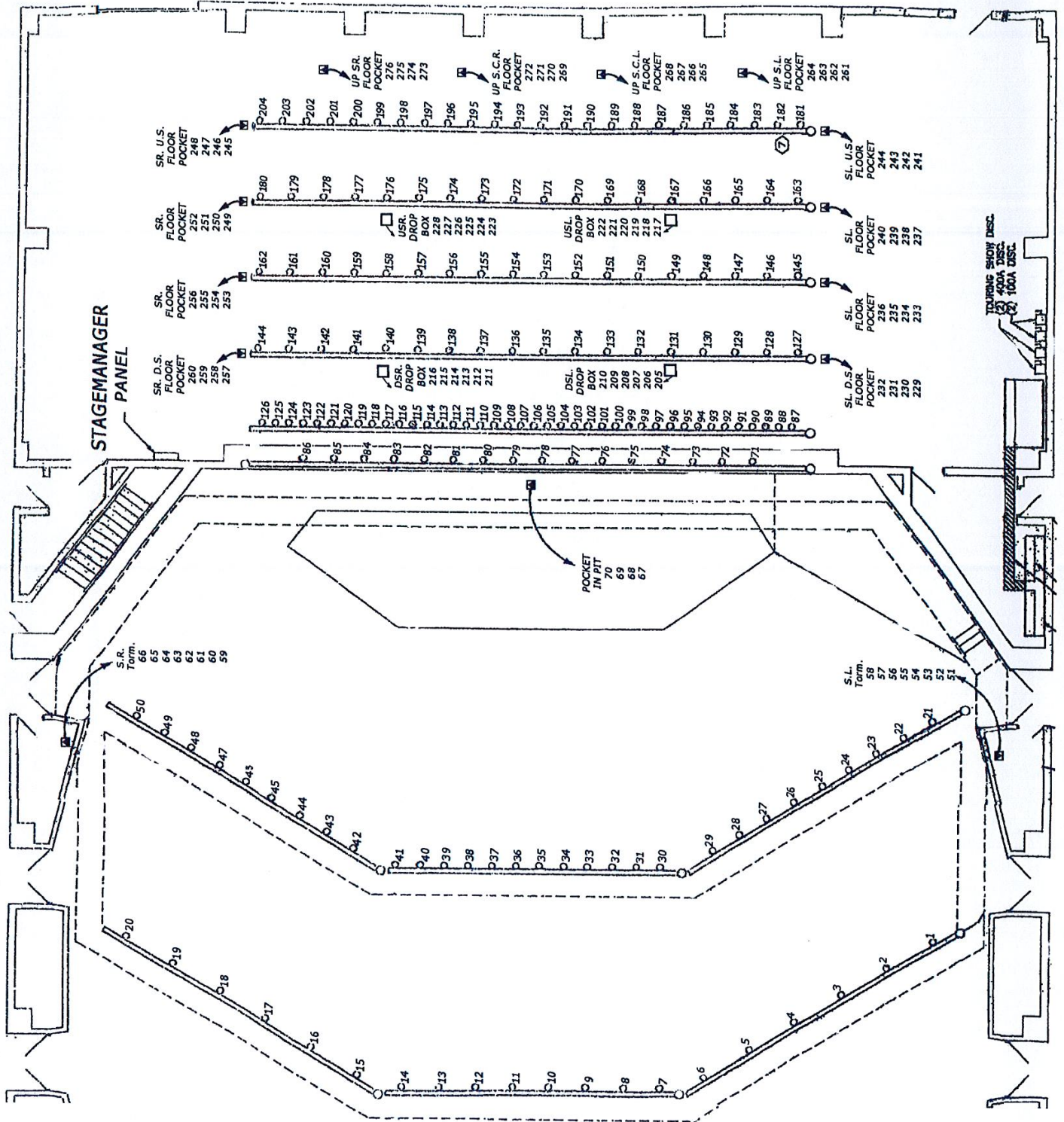
2 Color Rep Plot FOH



3 Color Rep Plot On Stage



Theatre Lighting Patch Layout



Lighting Inventory

| Instrument | RPCC No. | Wattage | Quantity |
|---|----------|----------|----------|
| Kliegl 8" Fresnal | F8 | 1000 | 10 |
| Altman 8" Fresnal | F8 | 1000 | 5 |
| Kliegl 6" Fresnal | F6 | 750 | 10 |
| Altman Par 64 | P64 | 1000 | 61 |
| Etc Source Four 26 Degree | S4 | 575 | 32 |
| Etc Source Four 36 Degree | S4 | 575 | 24 |
| Etc Source Four 10 Degree | S4 | 750 | 20 |
| Altman 6x16 Ellipsoidal | E6N16 | 750 | 12 |
| Altman 6x22 Ellipsoidal | E6N22 | 750 | 12 |
| Altman 3.5x8 Ellipsoidal | E3W | 500 | 12 |
| Etc Color Source Spot 19 Degree LED | ELED | L70 | 18 |
| Chauvet SlimPar Pro H USB | PLED | 3.218Lux | 16 |
| Kliegl 8' Strip Lights 3 Color 15 Lamp | S | 200 | 20 |
| Etc 19 Degree Lens Tubes | | | 3 |
| ETC 50 Degree Lens Tubes | | | 12 |
| **** This inventory DOES NOT include the 3 Source Fours that live in the Ice Arena nor the 11 | | | |
| 6" Fresnals that live in LaCriox Hall. | | | |

Venue Video

See house equipment for full portable video equipment list

- 19' x 25' flying projection screen (front and rear projection)

Grid

Grid Height - 68' 8"

Loft blocks are mounted to the grid iron

To hang motors, we stick points (5' basket) with special made pipe

Ropes are available for pick points

There is no house stacking motor

Fly Rail

See Line set schedule on the next page for standard layout.

Please confirm all line set schedules with Production Manager ahead of time.

60 total single purchase lines (including electrics)

- outtrim of 63'

- 1,100 lb. max weight
- 2" schedule 40 pipe

5 electrics

- 1 1/2" schedule 40 pipe, most are 67' long (a few are larger)
- Stage Pin Connectors
- House utilizes a Load Bridge, and does not have a mid-bridge or well
- 7k lbs. kept on load bridge
- More pig iron available on floor
- Electric Winch available for overhauling

Venue Soft Goods

House Main curtain is Ruby Red, and manual travels and guillotines

7 pairs of back legs

- 1st and 2nd legs are 21' wide, 4th-7th are 12' wide

5 borders

1 - white open weave Scrim

1 - soft pale blue Cyc

Venue Power

Tails, no cams

Licensed, house elected electrician only

Stage Left

- 1x 400 amp
- 2x 200 amp
- 1x 100 amp
- 2x 50 amp

Stage Right

- Single 50 amp plug

Shore Power is available in courtyard where trucks and buses can park

STAGE RIGGING AND LINESET SCHEDULE

MAXIMUM WEIGHT PER LINE SET - 1,260 lbs
STANDARD WEIGHT STORE ON LOAD BRIDGE - 7,000 lbs.

| Set No. | Description | Distance to Proscenium | Notes | Pipe Weight | Weight of Goods | Pipe Weight | Heavy Chain | Home Position | Moved To |
|---------|---------------------------|------------------------|--|-------------|-----------------|-------------|-------------|---------------|----------|
| 1 | FIRE CURTAIN | 1' | PERMENANT | | | | | | |
| 2 | Red Main Act Curtain | 2' | Travel or Guillotine | | | | | | |
| 3 | First Teaser | 2'6" | | | | | | | |
| 4 | First Leg | 3' | 21' Wide, On Tracks | | | | | | |
| 5 | First Electric | 4' | PERMENANT | | | | | | |
| 6 | Spare | 5' | | | | | | | |
| 7 | Spare | 5'6" | | | | | | | |
| 8 | Second Leg | 6'6" | 21' Wide, On Tracks | | | | | | |
| 9 | First Acoustical Ceiling | 7' | PERMENANT | | | | | | |
| 10 | Spare | 7'6" | | | | | | | |
| 11 | Spare | 8' | | | | | | | |
| 12 | Second Teaser | 8'6" | | | | | | | |
| 13 | Third Leg | 9' | 12' Wide, On Tracks | | | | | | |
| 14 | Second Electric | 10' | PERMENANT | | | | | | |
| 15 | Spare | 11' | | | | | | | |
| 16 | Spare | 12' | | | | | | | |
| 17 | Black Traveler | 12'6" | Travel or Guillotine | | | | | | |
| 18 | Spare | 13' | | | | | | | |
| 19 | Screen | 13'6" | | | | | | | |
| 20 | Second Acoustical Ceiling | 14' | PERMENANT | | | | | | |
| 21 | Spare | 14'6" | | | | | | | |
| 22 | Spare | 15' | | | | | | | |
| 23 | Spare | 15'6" | | | | | | | |
| 24 | Third Teaser | 16' | | | | | | | |
| 25 | Fourth Leg | 17' | 12' Wide, On Tracks | | | | | | |
| 26 | Third Electric | 18' | PERMENANT | | | | | | |
| 27 | Spare | 18'6" | | | | | | | |
| 28 | Spare | 19' | | | | | | | |
| 29 | Spare | 19'6" | | | | | | | |
| 30 | Spare | 20' | | | | | | | |
| 31 | Spare | 20'6" | | | | | | | |
| 32 | Third Acoustical Ceiling | 21' | PERMENANT | | | | | | |
| 33 | Fourth Teaser | 21'6" | | | | | | | |
| 34 | Fifth Leg | 23' | 12' Wide, On Tracks | | | | | | |
| 35 | Fourth Electric | 24'6" | PERMENANT | | | | | | |
| 36 | Spare | 26' | | | | | | | |
| 37 | Spare | 26'6" | | | | | | | |
| 38 | Spare | 28' | | | | | | | |
| 39 | Spare | 28'6" | | | | | | | |
| 40 | Spare | 29' | | | | | | | |
| 41 | Sixth Leg | 29'6" | | | | | | | |
| 42 | Spare | 13' | | | | | | | |
| 43 | Spare | 30'6" | | | | | | | |
| 44 | Spare | 31' | | | | | | | |
| 45 | Spare | 31'6" | | | | | | | |
| 46 | Fifth Teaser | 32' | | | | | | | |
| 47 | Seventh Leg | 32'6" | 12' Wide, On Tracks | | | | | | |
| 48 | Fifth Electric | 33'6" | PERMENANT | | | | | | |
| 49 | Spare | 34'6" | | | | | | | |
| 50 | Spare | 35' | | | | | | | |
| 51 | Spare | 35'6" | | | | | | | |
| 52 | Spare | 36' | | | | | | | |
| 53 | Spare | 36'6" | | | | | | | |
| 54 | Spare | 37'6" | | | | | | | |
| 55 | Spare | 38' | | | | | | | |
| 56 | Light Blue Cyclorama | 39' | | | | | | | |
| 57 | Maroon Traveler | 39'6" | Travel or Guillotine | | | | | | |
| 58 | Blue Traveler | 40'6" | Travel or Guillotine Has a tear on SL side | | | | | | |
| 59 | Gold Traveler | 41'6" | Travel or Guillotine | | | | | | |
| 60 | Spare/ Rear Projector | 43' | Rear Projection | | | | | | |

FULL STAGE WEIGHT 28 LBS
HALF STAGE WEIGHT 18 LBS
SHORT PIPE 3 BRICK
LONG PIPE 4 BRICK
6 HEAVY CHAINS 1/2 BRICK
LONG PIPE W/ HEAVY CHAINS 4 1/2 BRICK

Par 64 11.75 LBS
PAR 64 ALUM 7 LBS
6" FRESNALS 11.6 LBS
8" FRESNALS 21.8 LBS
8" BLACK FRESNEL 17.5 LBS
3.5" ALTMAN 8.6 LBS
16" ALTMAN 15.4 LBS
22" ALTMAN 14.75 LBS
19° BARREL 3 LBS
26° BARREL 3.2 LBS
36° BARREL 4.3 LBS
50° BARREL 3.8 LBS

S4 NO BARREL 13.6 LBS
S4 19° BARREL 16.7 LBS
S4 26° BARREL 16.8 LBS
S4 36° BARREL 17.9 LBS
S4 50° BARREL 17.4 LBS
S4 LED NO BARREL 19 LBS
S4 LED 19° BARREL 22 LBS
S4 LED 36° BARREL 22.2 LBS
S4 LED 50° BARREL 23.3 LBS
KLIEGEL 8X20 22.8 LBS
LED SLIM PAR PRO 6.3 LBS
ROUNDEL / EACH 1 LB
STRIP LIGHT / NO ROUNDELS 65 LBS
STRIP LIGHT / ROUNDELS 80 LBS

Venue Information

Distance from Down Stage Edge to FOH mix platform - 80'

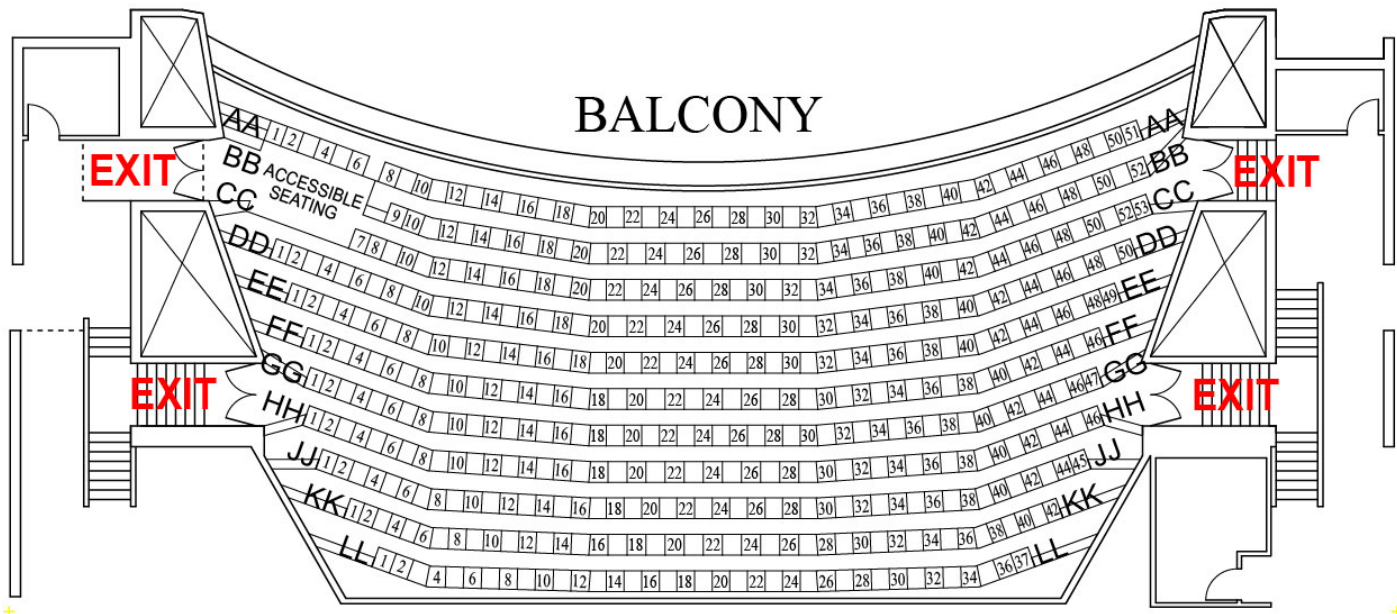
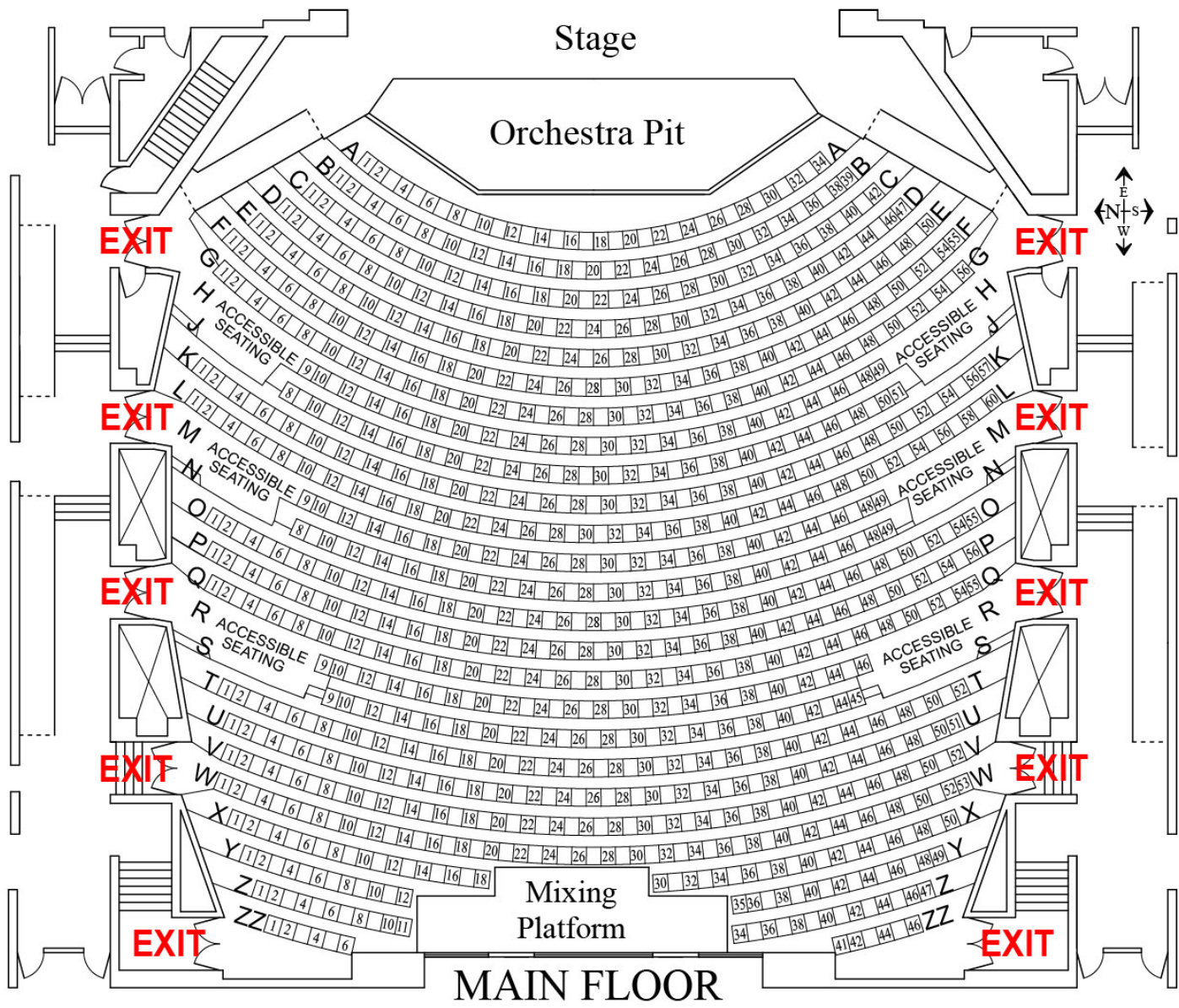
There are troughs house right and left above the entry way for FOH runs.

- Run distance is about 175'

There is a seating chart at the end of this guide

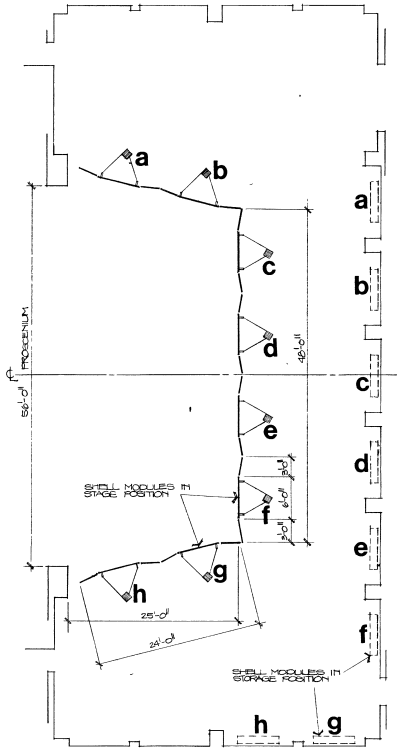
There are ADA ramps from house onto wings





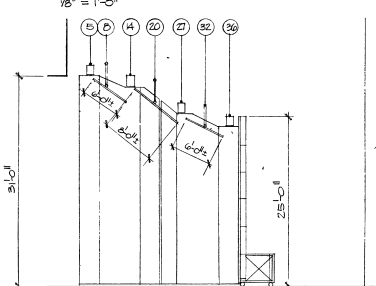
Theatre Plan - Stage View

SEE FROM
14. MEASURED
OF COLUMN



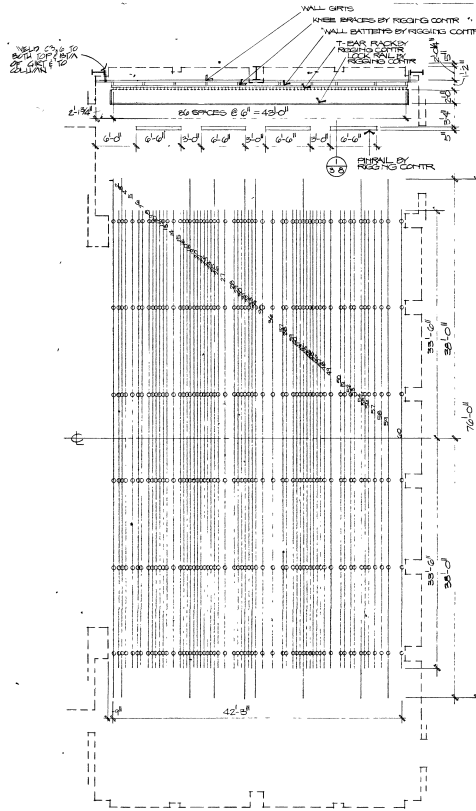
ACUSTICAL SHELL PLAN

1 STAGE PLANS
1/8" = 1'-0"

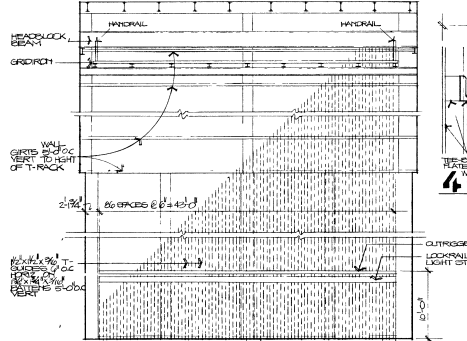


2. Motor operator controls will be provided with preset limit openings of full open, 2/3 open, 1/3 open and full close. Any of these positions may be selectively preset at the operating panel and will have indicator pilot lights, indicating which position each curtain is located in.

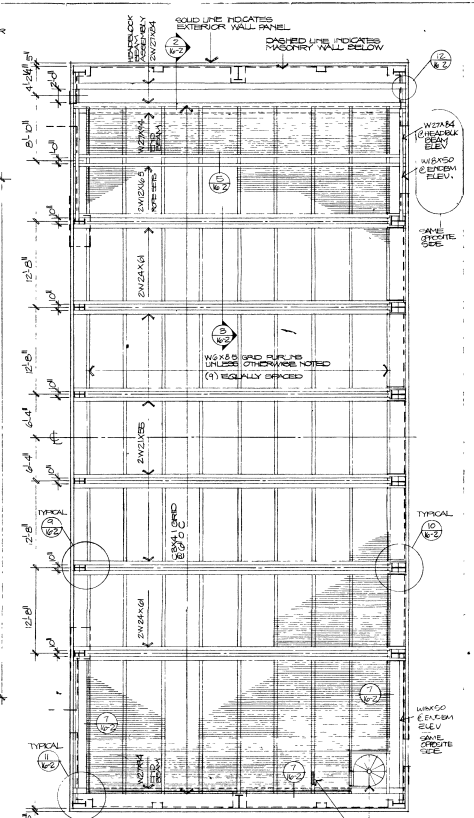
2 SECTION ACUSTICAL SHELL
1/8" = 1'-0"



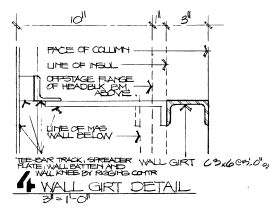
3 EQUIPMENT LAYOUT PLAN



3 ELEVATION NORTH WALL-STAGE
1/8" = 1'-0"

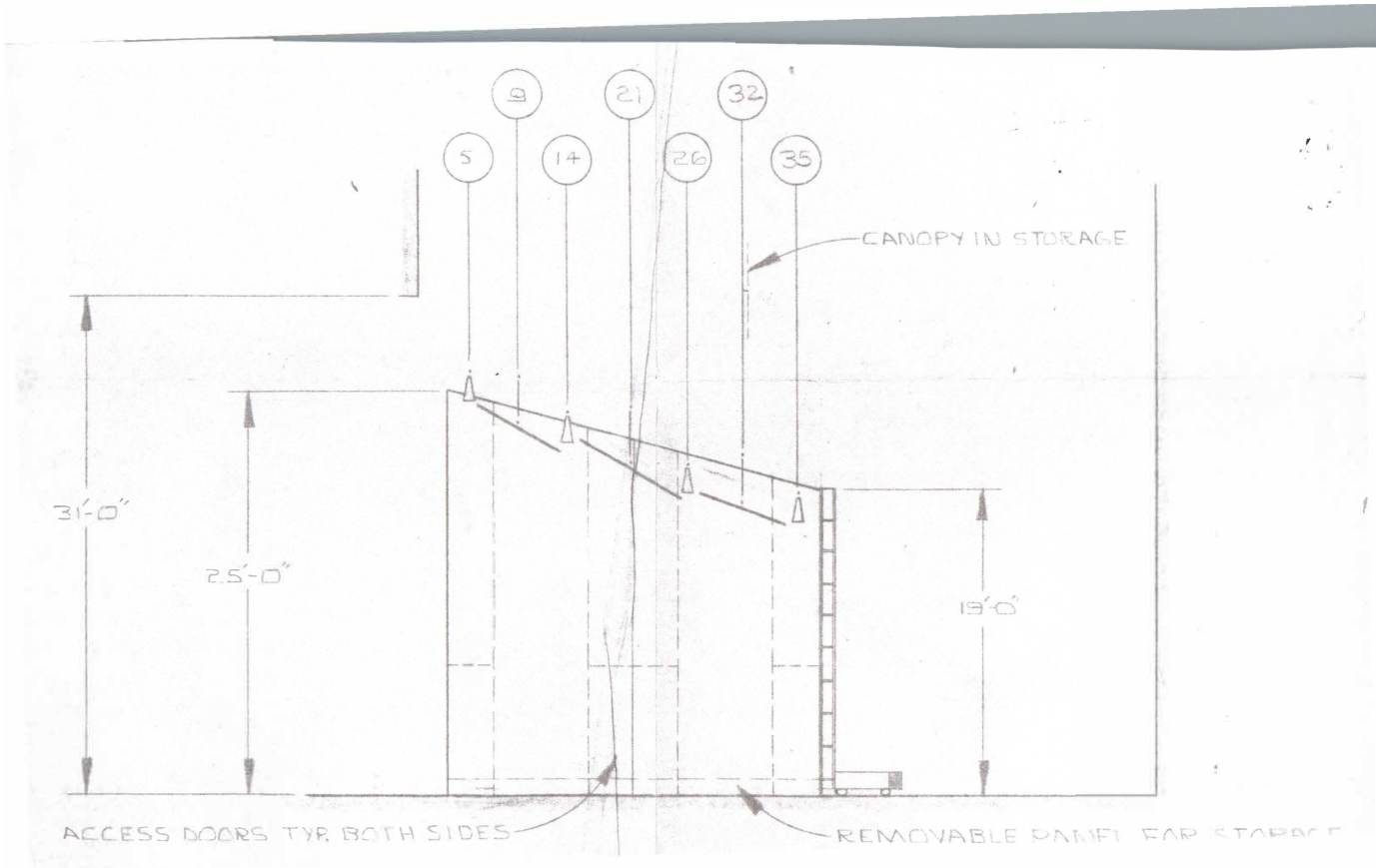
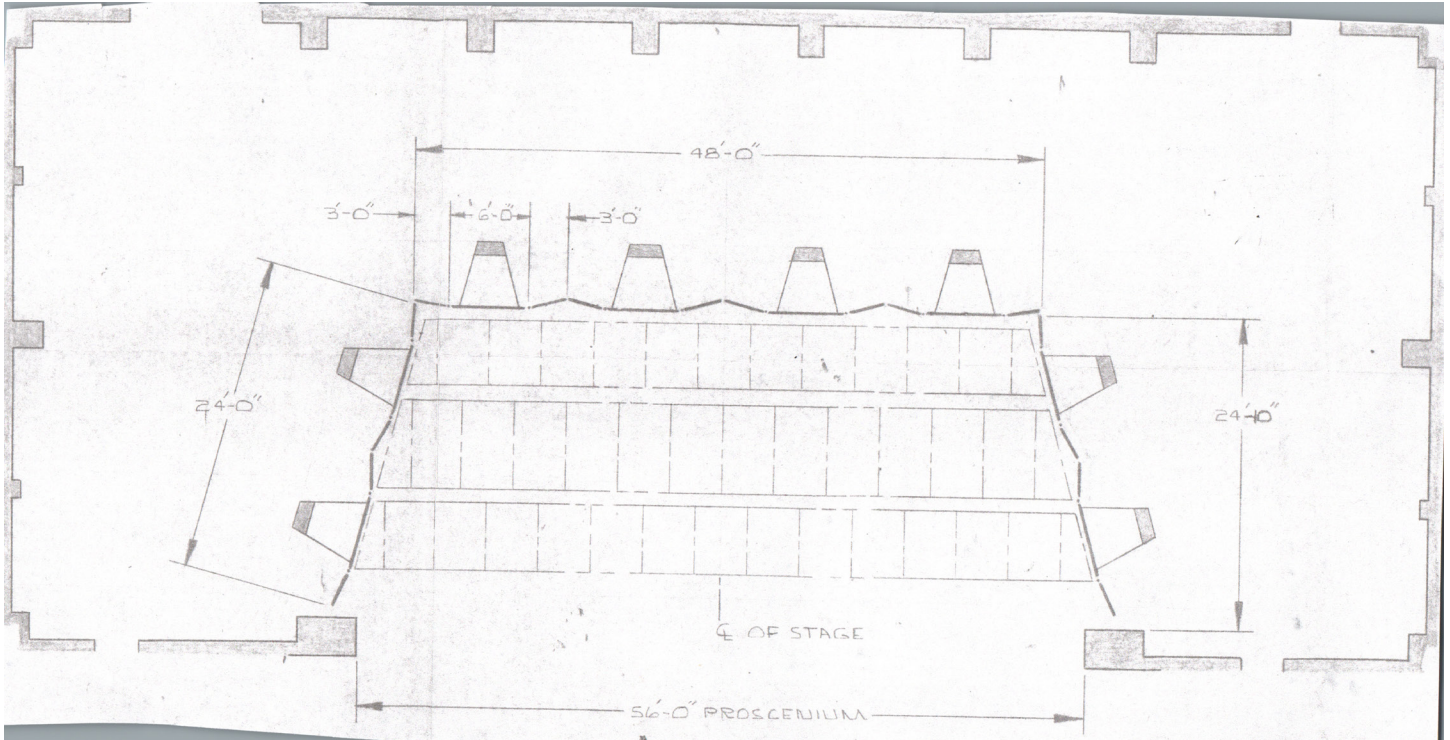


4 GRIDIRON PLAN

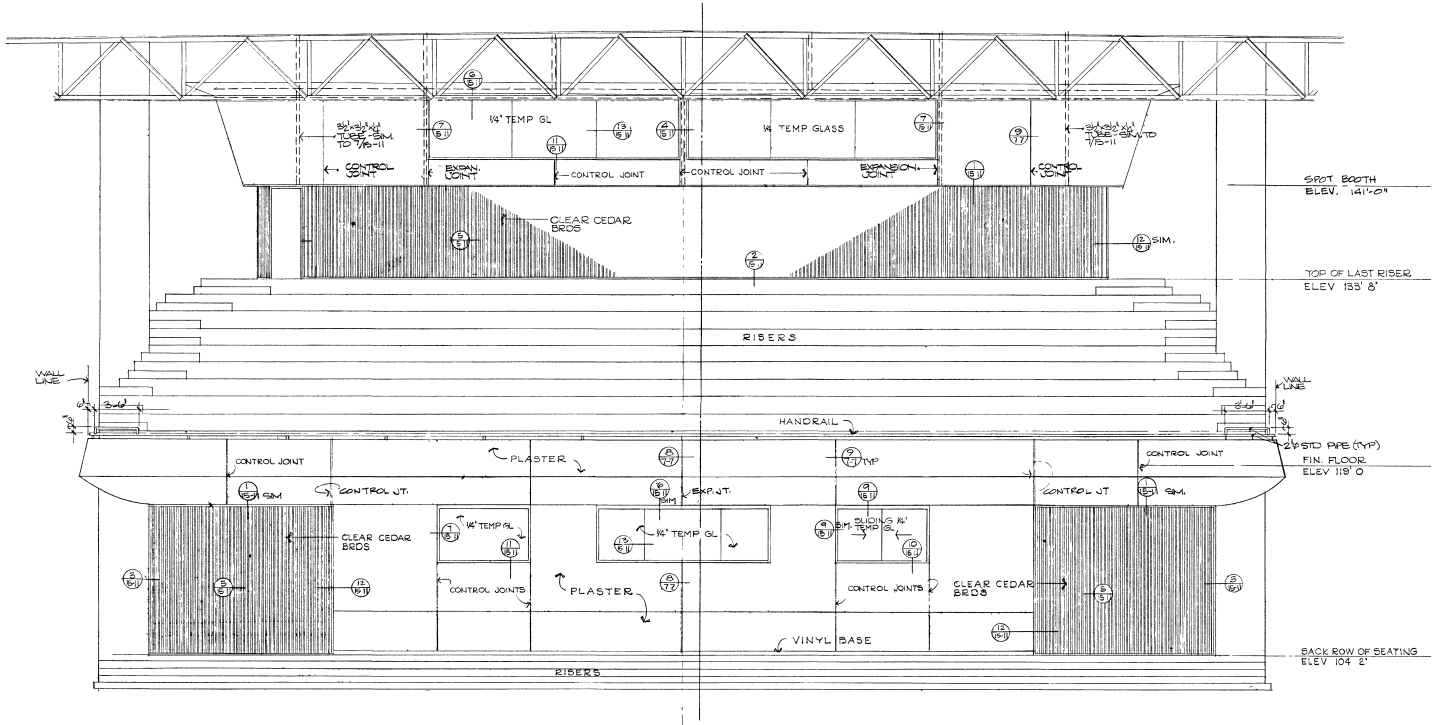


4 WALL GIRT DETAIL
3/16" = 1'-0"

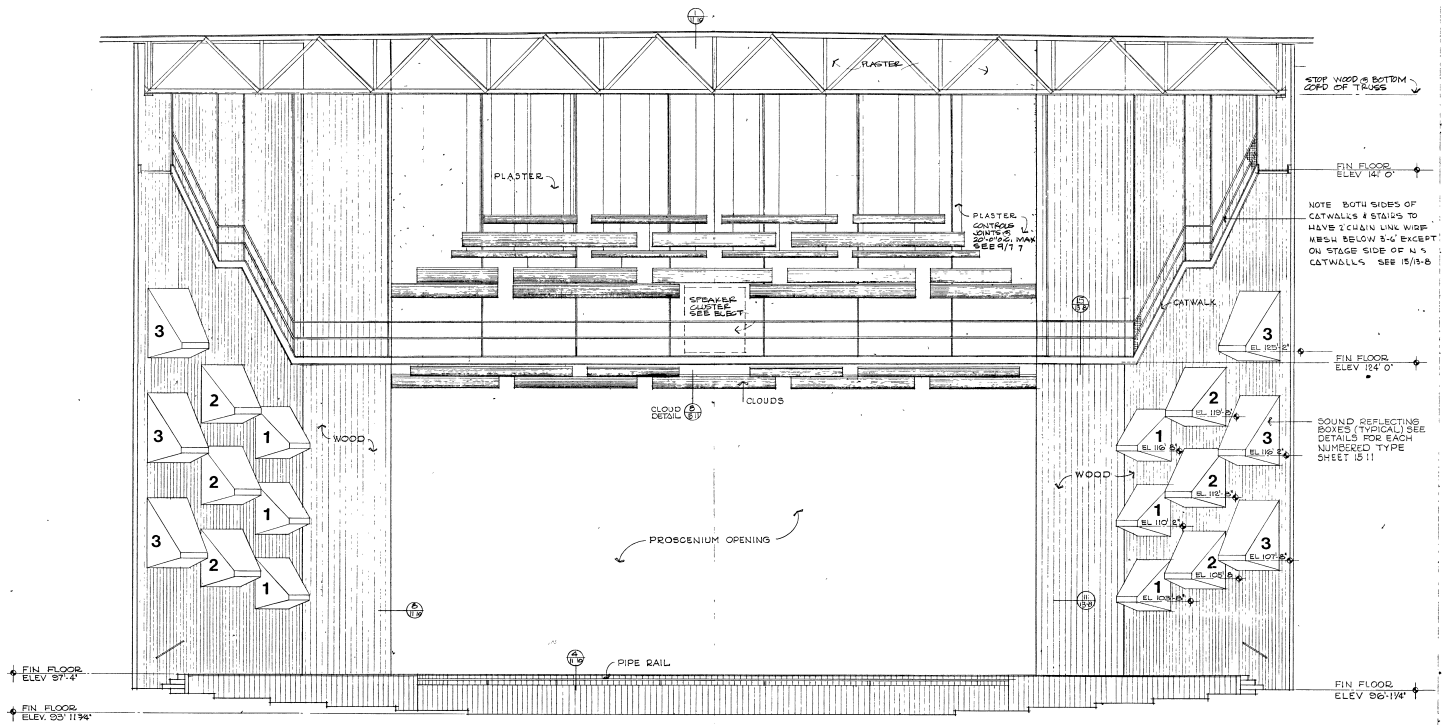
Theatre Acoustic Shell Drawing



Theatre Elevation from Stage

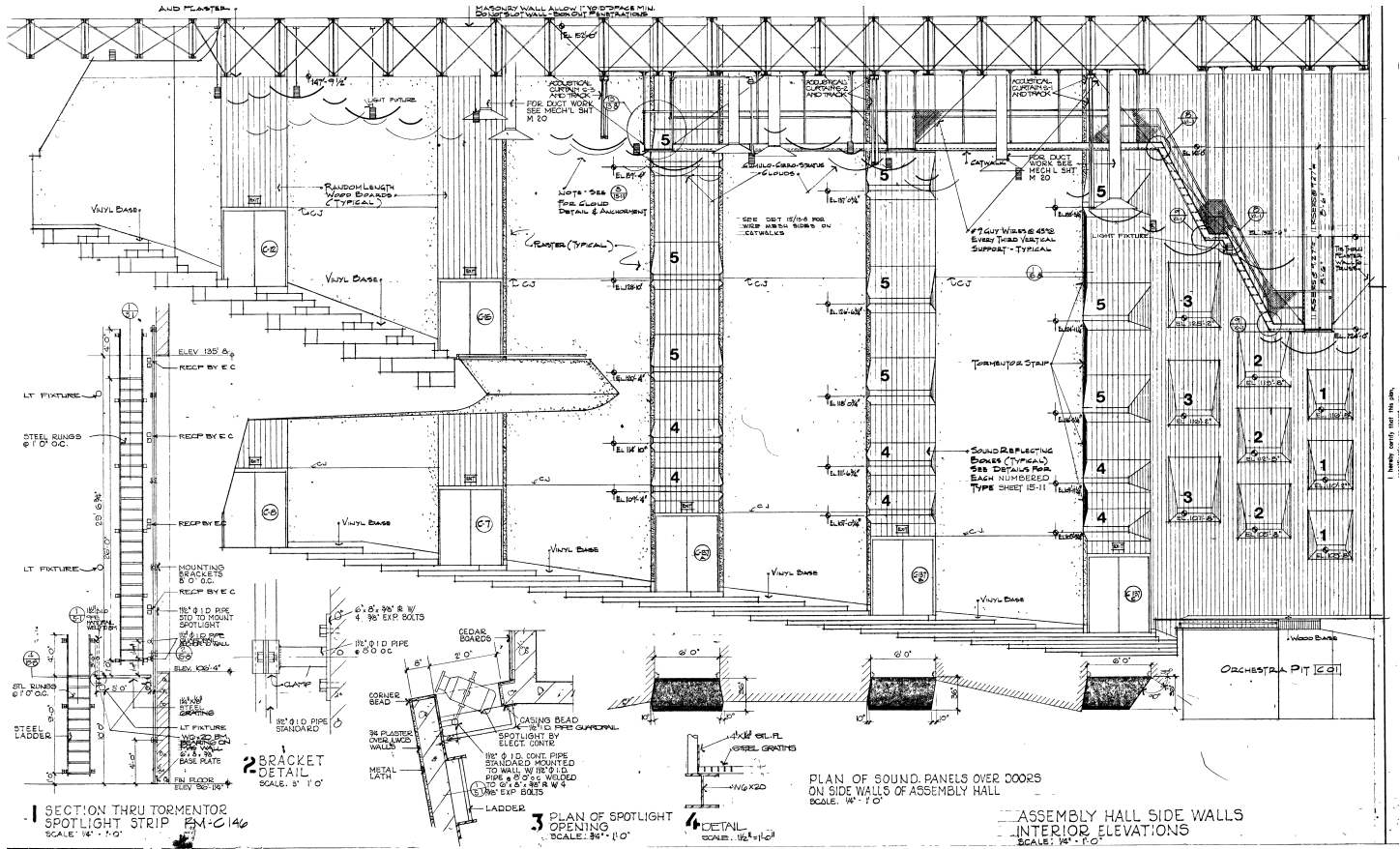


Theatre Elevation from House



FRONT WALL OF ASSEMBLY HALL
SCALE 1/4" = 1'-0"

Theatre Elevation from House Right



Tourmaster 6' Length (024)

| Group Capacity | Units Needed | Space Required |
|----------------|--------------|--------------------|
| 12-16 | 1 | 6'0" w x 4'7" d |
| 24-32 | 2 | 11'10" w x 5'5" d |
| 36-48 | 3 | 17'5" w x 6'1" d |
| 48-64 | 4 | 22'5" w x 7'7" d |
| 60-80 | 5 | 26'10" w x 8'10" d |
| 72-96 | 6 | 30'7" w x 10'10" d |
| 84-112 | 7 | 33'50" w x 12'7" d |

We have seven units, each with 3 steps, and back handrails.

Tour Master Choral Riser Information

SAFETY AND PRODUCTION

The Monument takes pride in ensuring the safety of all of its guests (both front and back of house). From fire lanes to pyrotechnic regulations, the following are some of the policies the building enforces to maintain a safe environment

EQUIPMENT/ FORK LIFTS

The use of the facility equipment, such as the forklifts, can only be operated by individuals certified by the facility to use that piece of equipment. All equipment should be operated and stored in a safe fashion.

FIRE REGULATIONS

For pyrotechnics, lasers, and open flames, an on-site inspection may be required.

All pyrotechnicians will need to have proof of the proper licensing with the ATF. Related paperwork (pyrotechnics, fireproofing certificates, insurances etc.) should be available upon request. For more information or questions please contact the Rapid City Fire Prevention Department at 605.394.5233

CABLES AND CORDS

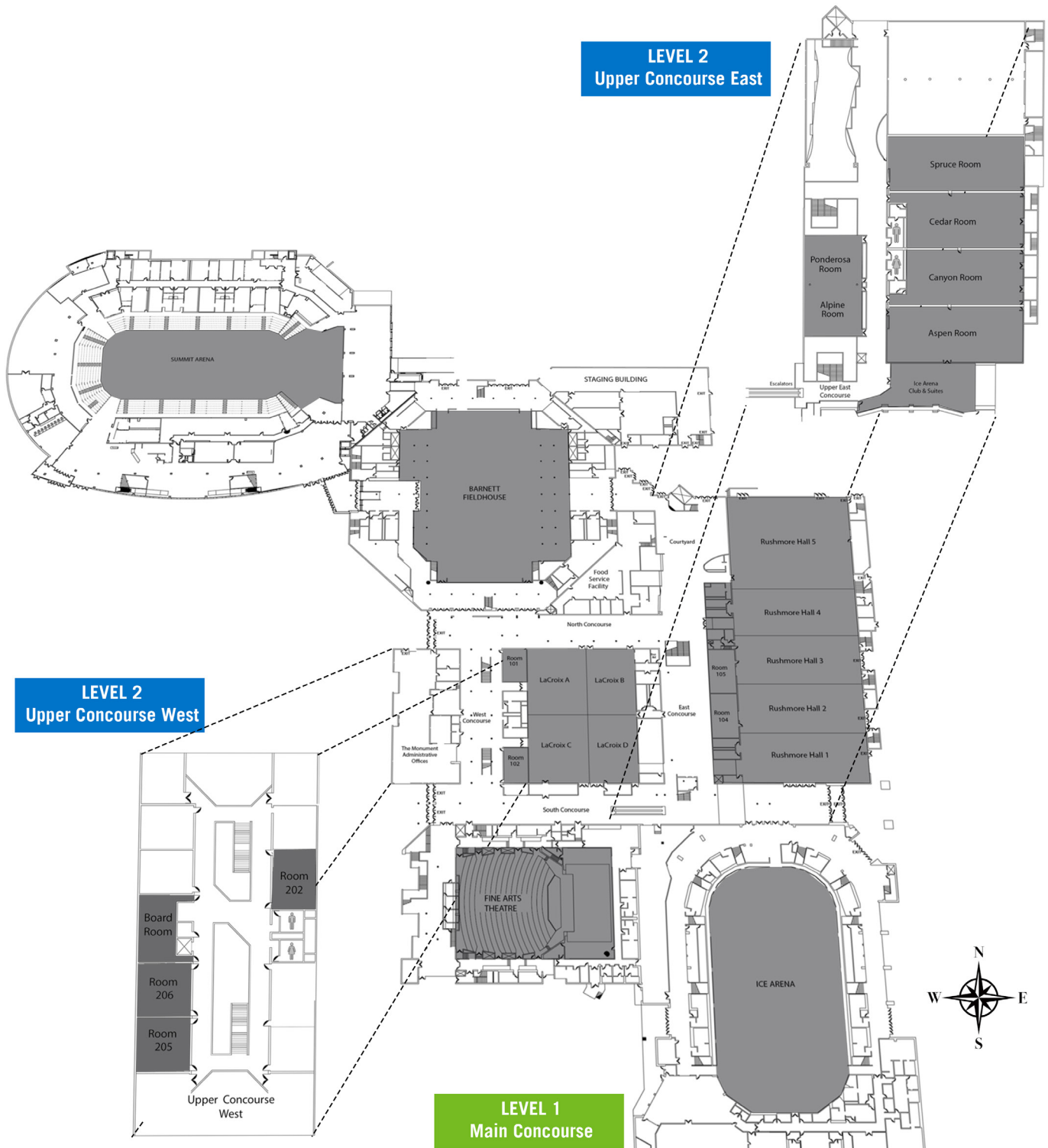
Any cable or cord that is in an area on the floor that is accessible to a guest, employee or member of a visiting tour must be covered by a cable ramp, or some kind of tape in order to minimize a tripping hazard.

LABOR

The Monument has a contract with IATSE Local 731. Calls and labor billing are both through the building. For production labor or equipment estimates, contact Jason Hope at (605) 381-0233 or JasonH@themonument.live

ALL UNDER ONE ROOF

Total of 480,000 square feet.



HOUSE EQUIPMENT

The Monument carries a large array of Stage Right equipment. To compliment these packages, we have several accessories, such as easy lift stairs, wheel chair ramps and lift, handrails and skirting.

Staging

- 49 – ME-500 Stage Supports – 48”-78”
- 20 – ME-3750 Rolling Stage Supports – 48”-78”
- 347- 4x8 Reversible Decks
- Z-800 portable stage support for riser packages
(No rolling risers)
 - 47 – 16”-24” legs
 - 37 – 24”-32” legs
- Stairs, ADA Ramps, Wheelchair lifts, guardrails, and skirting available
 - 4- Easy Lift stairs – 48”-78”
 - 1- Ascension Virtuoso 5460P ADA Lift
 - 4 ADA Ramp Packages

Rigging

- 4 - 1T CM Lodestar Motor w/ Distro
(80’ of chain, Ice Arena and Summit Arena only)
- 5 - 1T CM Lodestar Motor w/ Distro
(50’ of chain, Ice Arena and Theatre Only)
- 2 – 1T CM Lodestar Motors – Pickle Ran only
(Theatre and Barnett Only)

HOUSE EQUIPMENT

Rigging cont.

- 10 - 10' sticks of 12" box truss
- Rigging Steel package
(assortment of steel and spanset lengths, shackles, and burlap)

The Monument has several pieces of heavy equipment available to rent, including multiple forklifts of different capabilities, various aerial lifts, and scissor lifts.

• Forklifts

- 1- Mitsubishi - high lift mass that won't fit into Semis
- 2 - Clarke 3k lb. capacity
- 1 - Clarke 9k lb. capacity
- 1 - Toyota 6k lb. capacity
- 2 - sets of slide over fork extenders

• Lifts

- 1 - Genie Z-60 Boom
- 1 - 26' Scissor Lift
- 1 - Genie 36' single person man lift
- 1 - 19' Scissor Lift
- 1 - JLG 300A Lift

HOUSE EQUIPMENT

Portable Video Equipment

- Various sized LED screens on carts
- Projection
 - 6 - Panasonic PTRZ570B – 5,000 Lumen Laser Projector
 - 19'x25' flown projection screen
 - Front and rear project, Theatre Only
 - 9'x12' fast fold projection screen (4:3)
 - Front and rear skins available, bottom drape only
 - 7'x12' fast fold projection screen (9:16)
 - Front and rear skins available, bottom drape only
 - 8'x8' projection screen
- Video Boards
 - Atem Television Studio HD Pro
 - Atem Mini Extreme Iso
 - SSD Recording Capabilities
 - Atem Mini Pro
- Dedicated Video Recording
 - Black Magic Hyper Deck Studio HD Mini
- Laptops
 - 2 dedicated Production Laptops
 - for running content etc.
- Cameras
 - 2 - Newtek PTZ1 NDI cameras
 - 3 - Sony PXW-X160 w/ Tripod
 - 3 - Sony PXW-X200 w/ Tripod

HOUSE EQUIPMENT

Portable Video Equipment cont.

- Elgato Cam Link 4k HDMI to USB capture device
- 5x Decimator DEC-MD-LX (HDMI/SDI bi-directional converter)
- 2x Dak 70
- 2x 4 channel SDI splitter
- Trip lite SDI to Network adapters (2 input, 3 output)
- 3 SDI to NDI adapters (2 network sparks, 1
- 1 - 20x20 SDI Router
- Cabling and adapters

We have, on hand, a large variety of cables including SDI, HDMI, VGA, and almost every adapter you could think of.

Portable Audio Equipment

- Boards
 - Behringer X32 compact
 - Behringer X32 Producer
 - 5 - Behringer Xenyx 1002 (5 Channel)
 - 1- Behringer
- IO Box
 - Behringer S16 (16 channel digital snake)
 - 2 - MOTU M4 4x4 usb-c audio interface

HOUSE EQUIPMENT

Portable Audio Equipment cont.

- Microphones

- QLXD G50 (beltpack/handheld combo)

- Electro Voice RE15 Mic

- Electro Voice RE16 Mic

- Shure PZM-6LP Mic

- Rode NT5 Mic

- Shure SM53 Mic

- Sennheiser MKH 416 Mic

- Shure SM81 Mic

- Shure Beta 87 Mic

- Shure SM87 Mic

- Sennheiser 421 Mic

- Electro Voice RE20 Mic

- Crown PCC-160 Mic

- Sennheiser K3N Mic

- Shure SM58 Mic

- Shure MX202B Mic

- Shure SM57 Mic

- Shure SM85 Mic

- Shure 565SD Mic

- Microphone Stands and Podiums

- Assortment of straight and boom mic stands

- (Small, large, huge, etc)

- Microphone Stands and Podiums cont.
 - 2 - double goose neck stands
 - 1 - Black truss Podium (lectern)
 - 8 - Golden oak podiums (lectern)
 - 5 - Dark wood veneer podiums (lectern)
 - 1 - Light wood laminated podium
 - 1 - Double wide Gold Oak podium
 - Double step conductors podium
 - Single step conductors podium
 - 50 - Music stands
- Wireless Microphone Distribution
 - RF Venue DISTRO4 w/ fin antenna
- Clear Communication
 - Portable 1 channel comm station
- Miscellaneous
 - 10 channel xlr press box
 - Portable 1 channel clear comm station
 - with beltpacks and muffs
 - Ground Lift Transformers
 - LTI – single channel passive 3.5mm direct box
 - (laptops, ipods, phones, etc)
 - 1 - Portable Hard of Hearing System
- Cabling and adapters
 - We have, on hand, a large variety of audio cables and adapters for almost every situation.

The Monument carries an array of other equipment.

- Pipe and Drape
 - 2120' of 8' Black
 - 120' of 8' White
 - 469 - Silver Poles
 - 55 - Black Poles
- US and SD State Flags in various sizes
- 232' of CC500 Barricade
 - Plus 2 inside and 2 outside corners
- 697' of Bike Rack

THE MONUMENT

444 Mt. Rushmore Rd. N.
Rapid City, SD 57701
605-394-4115
themonument.live

